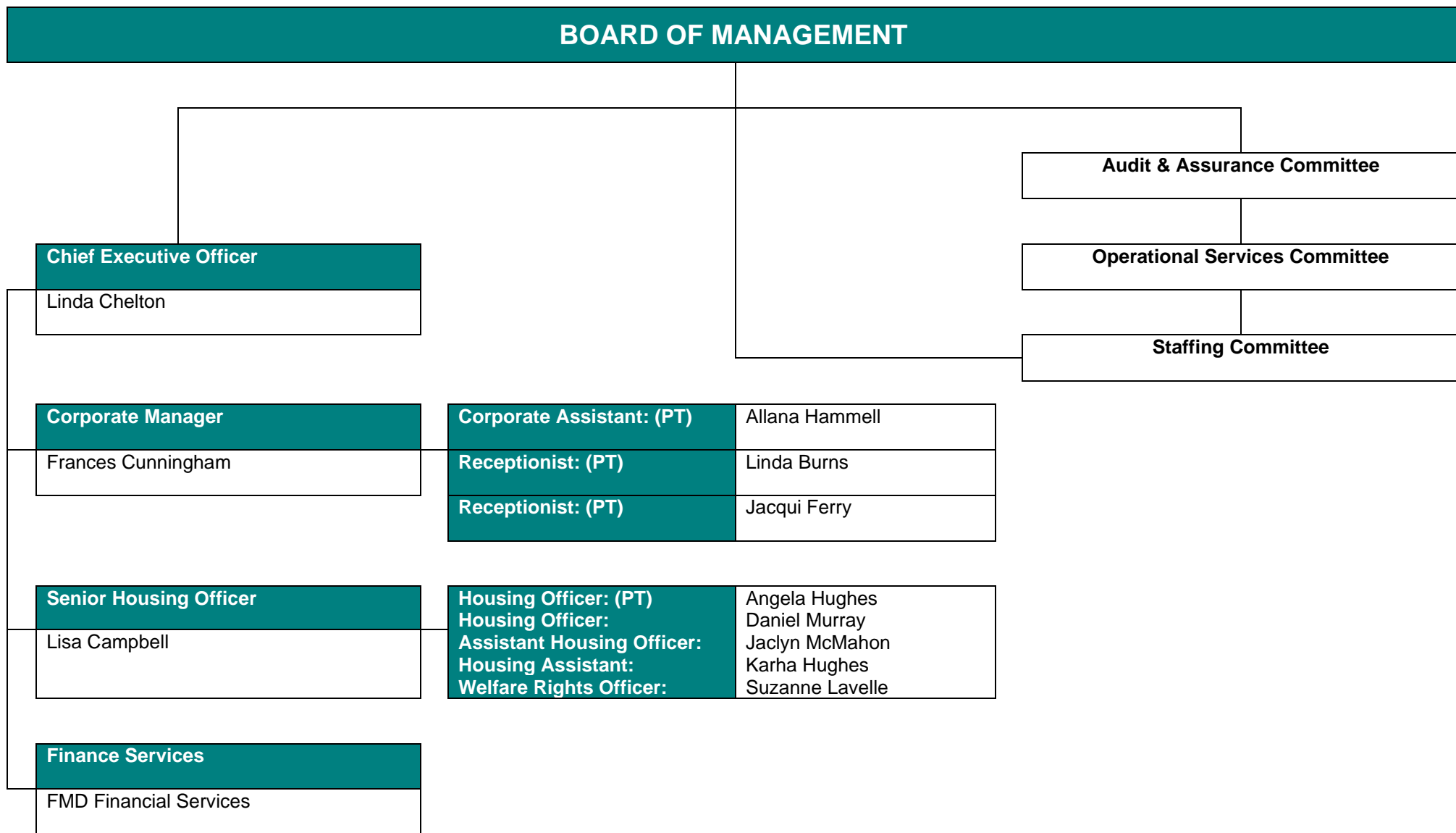


CRAIGDALE'S ORGANISATIONAL STRUCTURE



BOARD OF MANAGEMENT

Chief Executive Officer

Linda Chelton

Corporate Manager

Frances Cunningham

Corporate Assistant: (PT)

Allana Hammell

Receptionist: (PT)

Linda Burns

Receptionist: (PT)

Jacqui Ferry

Senior Housing Officer

Lisa Campbell

Housing Officer: (PT)

Angela Hughes

Housing Officer:

Daniel Murray

Assistant Housing Officer:

Jaclyn McMahan

Housing Assistant:

Karha Hughes

Welfare Rights Officer:

Suzanne Lavelle

Finance Services

FMD Financial Services

Audit & Assurance Committee

Operational Services Committee

Staffing Committee